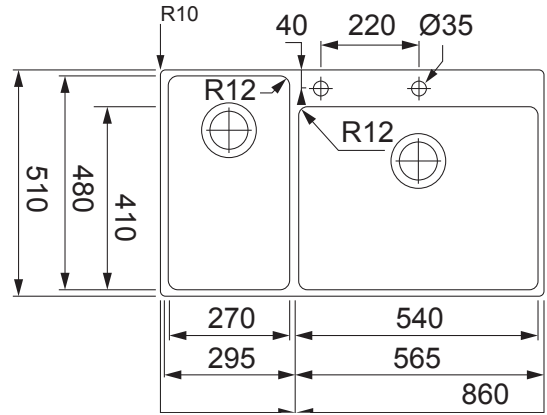


# BOX CENTRE

BWX220-54/27SBL



**NOTE:** May require purchase of an additional waste kit.

## PRODUCT INFORMATION

<b>Installation</b>	Topmount/Flushmount
<b>Dimensions</b>	860 x 510mm
<b>Cabinet Base</b>	900mm
<b>Bowl Size</b>	540 x 410 x 200mm/44L 270 x 480 x 200mm/26L
<b>Bowl Radius</b>	12mm
<b>Cut-Out Size</b>	Template
<b>Cut-Out Template</b>	Yes
<b>Waste Outlet</b>	Semi Integrated Waste
<b>Overflow</b>	Yes
<b>Tap Holes</b>	ø35mm
<b>Remote Waste</b>	Yes
<b>Finish</b>	Stainless Steel
<b>Warranty</b>	50 Years

**NOTE:** Cut-out dimensions are a guide only, please use the actual sink as your template.

## FEATURES & BENEFITS



Food Preparation Centre



18/10 Stainless Steel



Push Button Remote Waste



Sound Deadening Pads



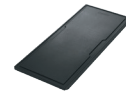
Hygienic Integrated Waste

## ACCESSORIES

— Included Accessory  
- - - Available Accessory



**CB134**  
Chopping Board



**CB120**  
Chopping Board



**DB138**  
Wire Rack



**KS792**  
Knife Set



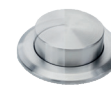
**CB135**  
Knife Holder



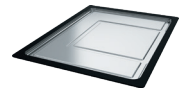
**SBCUW-70S**  
Strainer Bowl



**AC292**  
Stainless Steel Organiser



**PB835**  
Push Button Waste



**DT360**  
Extension Drainer

BARE SINK OPTION AND SOME SINK & TAP PACKAGES DO NOT INCLUDE ACCESSORIES. PLEASE CHAT TO YOUR SALES CONSULTANT FOR FURTHER INFORMATION.

LAST UPDATED: 21 SEPTEMBER 2021

