

ZUCCHETTI.

Pan Wall Mounted Basin Mixer with Plate 175mm Spout

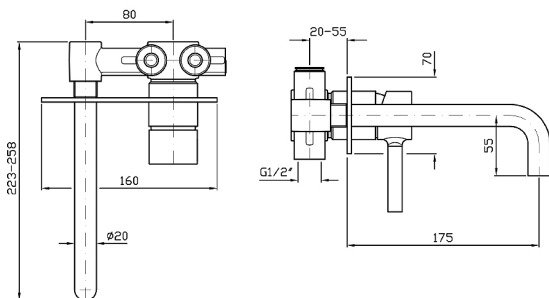
ZP6032+R99815.SB

WELS: 5 stars

Litres/minute: 6L

WELS License: 0023

Finish: Satin Black



The Pan wall tap mixer is Zucchetti's interpretation of the basic cylinder type mixer tapware. Pan begins with classic archetypes and goes on to develop completely original aesthetics and new types of taps. Designers Roberto and Ludovica Palomba have concentrated their attention on the joint between the vertical and horizontal elements. As in nature there are no cuts and weldings, so that the spout and handle have a soft connection to the body, like the branch to the trunk of a tree.

The Pan wall tap mixer features a flawlessly polished forged brass wall plate in a compact 70mm height.

Spout projection of 175mm.

WARRANTY
15 years

*Conditions apply.

streamline

Dimensions are in millimeters and are subject to manufacturing variations. Streamline reserves the right to vary specifications at any time without notice. Information provided within this specification sheet is correct at the date of printing. Please confirm all particulars with your sales consultant prior to purchase.
Version: 1.0 - August 2015

www.streamlineproducts.com.au | Ph: 1300 735 352