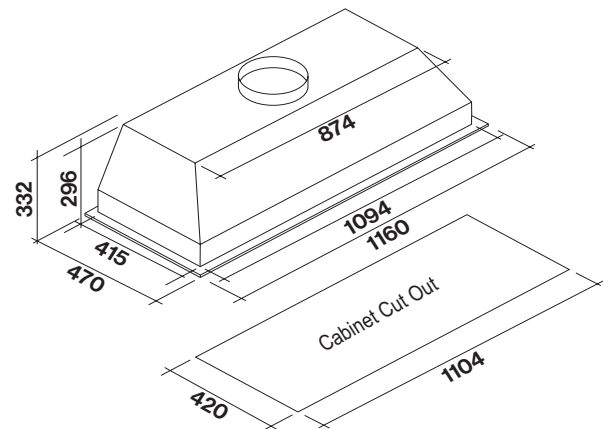




Product Features

Motor Type	Off Board Motor
Dimensions	1160 x 470 x 332mm Suits 90cm-130cm cooking surfaces
Filtration Type	Baffle Filters x 3
Lighting	Adaptive Dynamic LED Strip
Finish	Surgical grade 304 stainless steel
Frame	Flushmount
Controls	Slim Profile Touch Control (optional remote controller)
Speed Settings	3 Speed + Boost
Timer Function	15 Min Auto Shut-Off
Ducting	200mm Circular Outlet + 5m of flexible ducting supplied
Installation Info	Quick Install Clips
Other	Suitable for outdoor BBQ's

Dimensioned Drawings

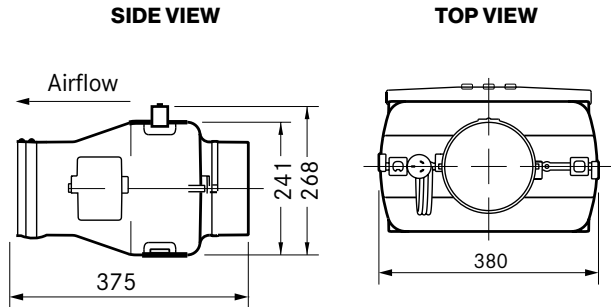


Model Code	Motor Output	Installation Option
FP3GV12S2-ER2010	2010m ³ /hr	External Roof Motor
FP3GV12S2-EW2010	2010m ³ /hr	External Wall Motor

TECHNICAL DIAGRAMS—MOTORS

IN-ROOF MOTOR (p. 56)

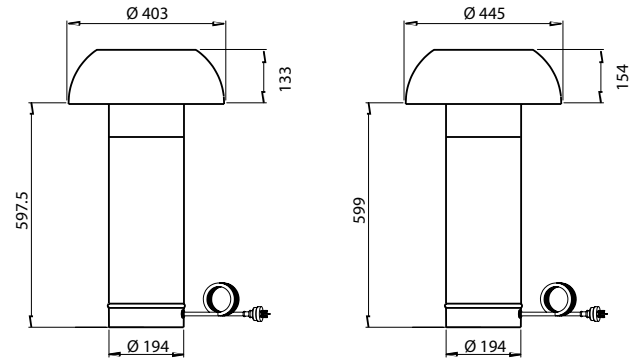
IN-765m³/h – IN-1140m³/h



EXTERNAL ROOF MOTOR (p. 56)

ER-765m³/h – ER1140m³/h

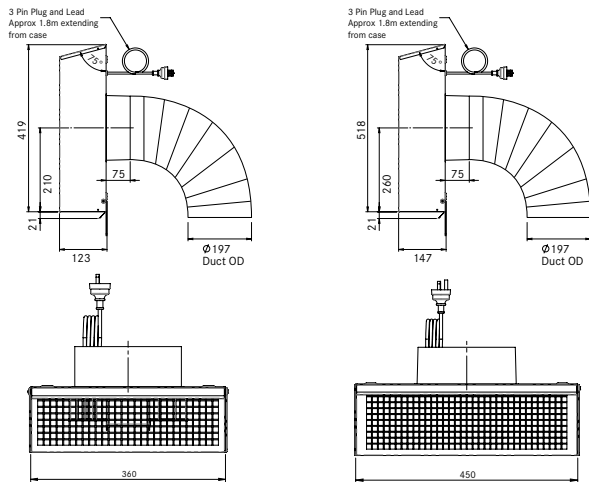
ER-2010m³/h



EXTERNAL WALL MOTOR (p. 56)

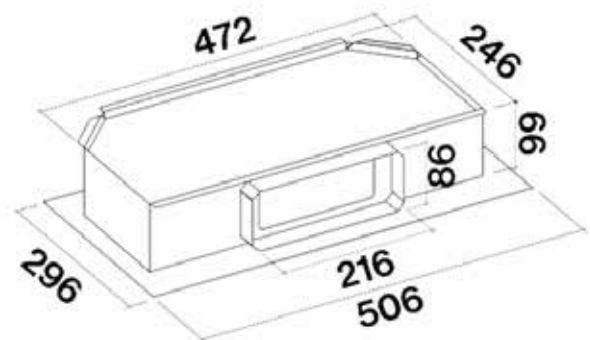
EW-765m³/h – EW-1140m³/h

2010m³/h



RECIRCULATING MOTOR (p. 57)

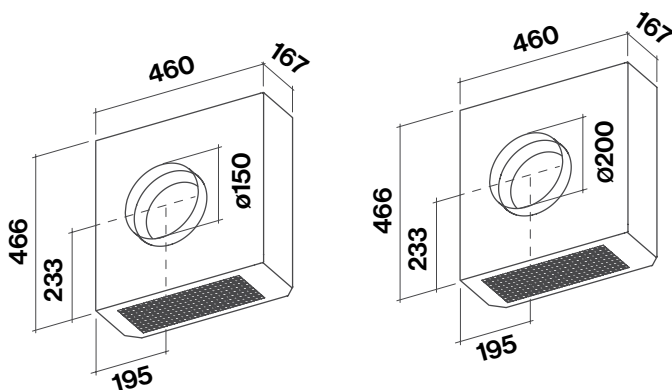
UC-600m³/h



EXTERNAL WALL MOTOR (p. 57)

EW-1000m³/h

EW-1500m³/h



REMOTE INLINE MOTOR (p. 57)

950m³/h

1300m³/h

