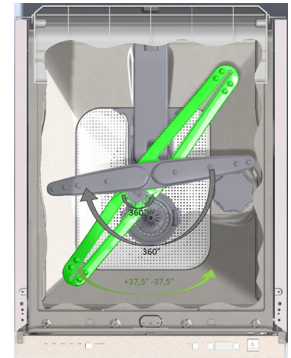


DWA4510X

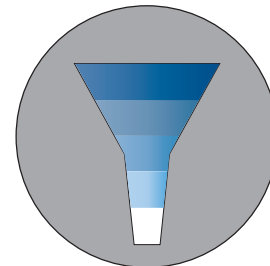
Smeg 45cm freestanding/built-in dishwasher



SWING WASH SYSTEM

Innovative oscillation improves wash performance, ensuring optimum water coverage to the tank via two unique spray arms. The longer arm (green) swings at 75 degrees right and left while the shorter arm (grey) spins freely, performing a 360 degree rotation. In combination these arms provide maximum wash coverage.

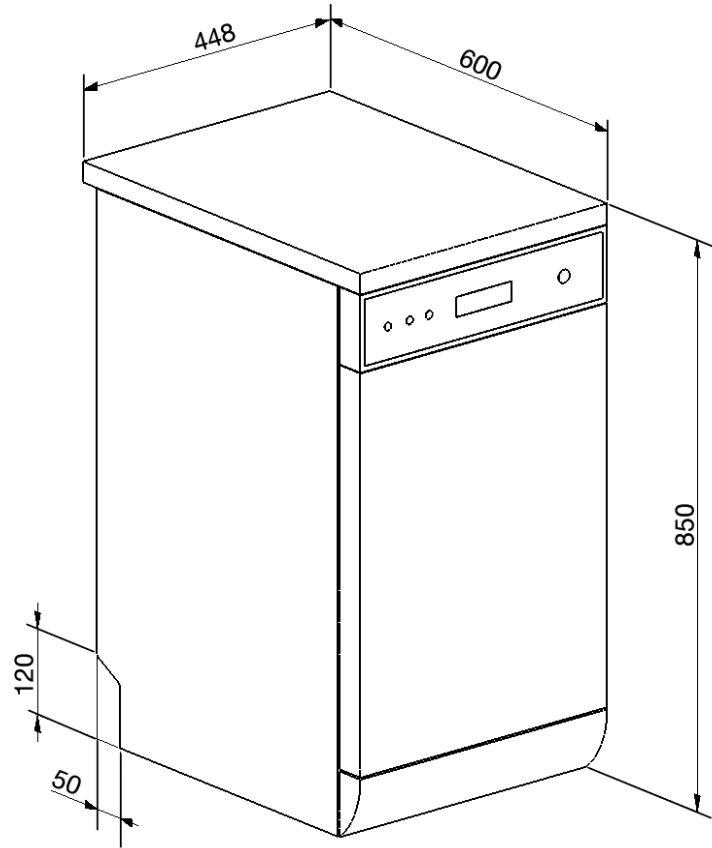
- EAN** 8017709202873
- installation** freestanding/built-in
- dimensions** 850mmH x 448mmW x 600mmD
- capacity** 10 placesettings (IEC international)
- wash action** two wash arms — lower arm with swing system
- programs** five wash programs
- wash temperatures** 40°C, 55°C, 65°C and 70°C
rinses at ambient, 68°C and 70°C
- half load** top basket on four wash programs, separate cutlery basket
- baskets** 2 x graphite: top baskets tilts for larger plate placement below
- water connection** cold or hot (upto 60°C)
- drying** natural condenser drying
- anti-flood** five-stage water security
- noise level** 48 dB
- water usage** 11.3 litres
- power** 1.9 kW
230-240V/50Hz
10A connection
1.4m cable
- accessory** worktop/lid fitted — removable
- warranty** two years parts and labour







5-STAGE FILTRATION SYSTEM

The ultimate dishwasher filtration system maintains a high quality wash by trapping food, thus preventing it from entering the wash system.





| Program Number & Symbol | | | Load Crockery & Cutlery | Program progress | Duration | Consumption | |
|-------------------------|-------------------------------------------------------------------------------------|----------------|-------------------------------------------------------------|-----------------------------------------------------------------------|----------|--------------|----------|
| | | | | | minutes | water litres | power kW |
| 1 |  | soak | pans and dishes awaiting completion of load | cold prewash | 9 | 5 | 0.02 |
| 2 |  | normal ECO (*) | crockery and cutlery with normal soiling | cold prewash wash at 50°C rinse at 40°C dry | 126 | 11.3 | 0.605 |
| 3 | Eco | ECO (*) | dishes with normal soiling, even with dried-on residues | wash at 45°C cold rinse rinse at 65°C dry | 95 | 20 | 1.40 |
| 4 |  | normal | dishes with normal soiling, even with dried-on residues | cold prewash wash at 65°C cold rinse rinse at 68°C dry | 80 | 17 | 1.20 |
| 5 |  | super | heavily soiled pans and dishes, even with dried-on residues | hot prewash wash at 70°C cold rinse (2) rinse at 70°C dry | 105 | 20 | 1.50 |

* reference program as per AS/NZS 2007