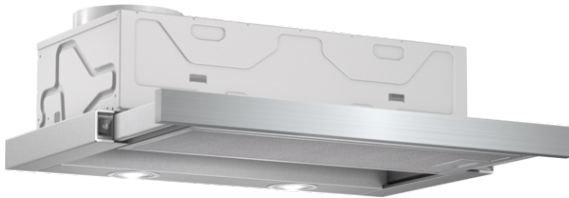


Serie | 2 Hoods
DFM064W50A
60 cm Slideout Rangehood
C


The slideout rangehood practically disappears into your upper cabinet, giving you a sleek kitchen finish.

- **Extraction rate:** at 400 m³/h, it quickly ensures optimal kitchen air quality.
- Halogen lighting provides optimal, energy-efficient illumination of the cooktop.
- **Especially quiet:** high performance at just 68 dB.

Technical Data

Typology :	Pull-out
Approval certificates :	CE, VDE
Length electrical supply cord (cm) :	175
Required niche size for installation (HxWxD) :	162mm x 526mm x 290mm
Net weight (kg) :	9.0
Type of control :	mechanical
Number of speed settings :	3
Maximum output air extraction (m ³ /h) :	400
Maximum output recirculating air (m ³ /h) :	190
Number of lights :	2
Noise level (dB) :	68
Diameter of air outlet (mm) :	150 / 120
Grease filter material :	Washable aluminium
Odour filter :	No
Operating Mode :	Convertible
Optional accessories :	DSZ4545, DSZ4551
Type of lamps used :	Halogen
Total power of the lamps (W) :	40
Grease filter type :	Kassette
Connection Rating (W) :	145
Current (A) :	10
Voltage (V) :	220-240
Frequency (Hz) :	50
Plug type :	AU plug
Installation typology :	Built-in
Material body :	zinc plated
Approval certificates :	CE, VDE
Plug type :	AU plug
Dimensions of the product, with chimney (if exists) (in) :	/ x x
Dimensions of the packed product (in) :	12.20 x 25.19 x 14.17
Net weight (lbs) :	19
Gross weight (lbs) :	22
Motor location :	Integrated motor in hood body
No-return airflow flap :	No
Length electrical supply cord (cm) :	175
Dimensions of the product, with chimney (if exists) (mm) :	203 x 598 x 290
Dimensions of the packed product (HxWxD) (mm) :	310 x 640 x 360
Net weight (kg) :	9.0
Gross weight (kg) :	10.0


Optional accessories

- DSZ4545 : Recirculating kit
- DSZ4551 : Active carbon filter

Serie | 2 Hoods

DFM064W50A

60 cm Slideout Rangehood

The slideout rangehood practically disappears into your upper cabinet, giving you a sleek kitchen finish.

Power and Mode of Operation

- Maximum extraction 400 m³/h
- 3 power settings
- Ducted and recirculated-air operation

Design & Innovation

- Appliance colour: Steel body, metallic finish
- Stainless steel fascia panel/pelmet included
- 2 x 20W halogen light
- Install into a 60cm wide wall cupboard

Convenience

- Automatic On/Off operation when telescopic canopy is pulled out and pushed back

Cleaning

- Dishwasher safe metal grease filters

Safety and Quality

- Noise min./max. Normal Level: 59/68 dB
Noise max. Intensive setting: NO_FEATURE dB
- 2 year warranty

Dimensions (HxWxD)

- Appliance dimensions (HxWxD): 203 x 598 x 290 mm
- Built-in dimensions (HxWxD): 162 x 526 x 290 mm

Technical Information

- Noise level according to EN 60704-3 und EN 60704-2-13 at max. normal use exhaust air: 68 dB(A) re 1 pW (54 dB(A) re 20 µPa sound pressure)
- Power rating: 145 W
- Average Energy Consumption: 66.3 kWh/year
- Diameter pipe Ø 150 mm (Ø 120 mm enclosed)

Serie | 2 Hoods
DFM064W50A
60 cm Slideout Rangehood
