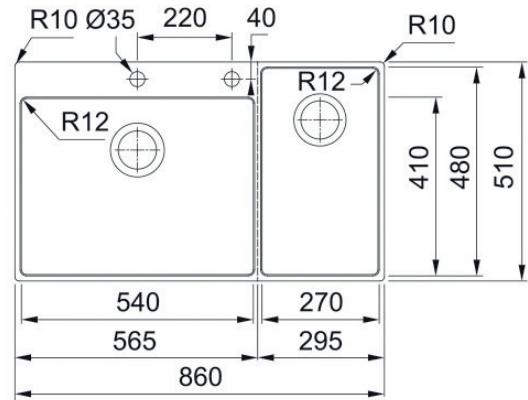


BOX CENTRE

BWX220-54/27SBR



NOTE: May require purchase of an additional waste kit.

PRODUCT INFORMATION

Installation	Topmount/Flushmount
Dimensions	860 x 510mm
Cabinet Base	900mm
Bowl Size	540 x 410 x 200mm/44L 270 x 480 x 200mm/26L
Bowl Radius	12mm
Cut-Out Size	Template
Cut-Out Template	Yes
Waste Outlet	Semi Integrated Waste
Overflow	Yes
Tap Holes	ø35mm
Remote Waste	Yes
Finish	Stainless Steel
Warranty	50 Years

NOTE: Cut-out dimensions are a guide only, please use the actual sink as your template.

FEATURES & BENEFITS



Food Preparation Centre



18/10 Stainless Steel



Push Button Remote Waste



Sound Deadening Pads



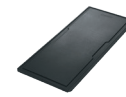
Hygienic Integrated Waste

ACCESSORIES

— Included Accessory
- - - Available Accessory



CB134
Chopping Board



CB120
Chopping Board



DB138
Wire Rack



KS792
Knife Set



CB135
Knife Holder



SBCUW-70S
Strainer Bowl



AC292
Stainless Steel Organiser



PB835
Push Button Waste



DT360
Extension Drainer

BARE SINK OPTION AND SOME SINK & TAP PACKAGES DO NOT INCLUDE ACCESSORIES. PLEASE CHAT TO YOUR SALES CONSULTANT FOR FURTHER INFORMATION.

LAST UPDATED: 21 SEPTEMBER 2021

