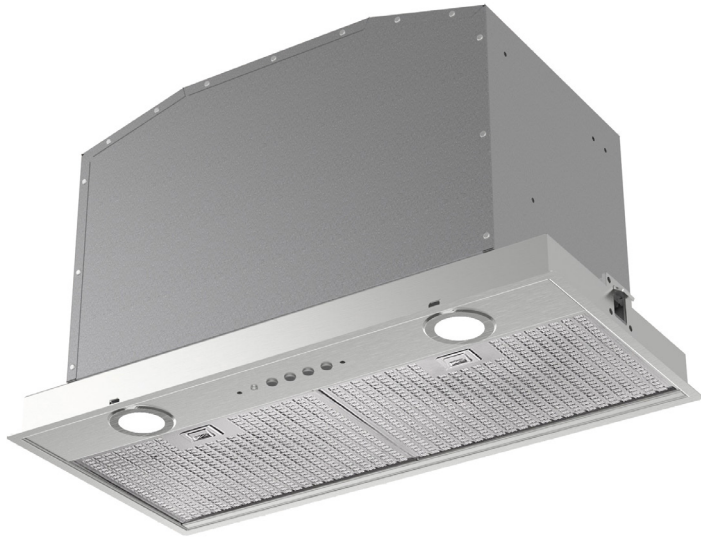


SHU670X

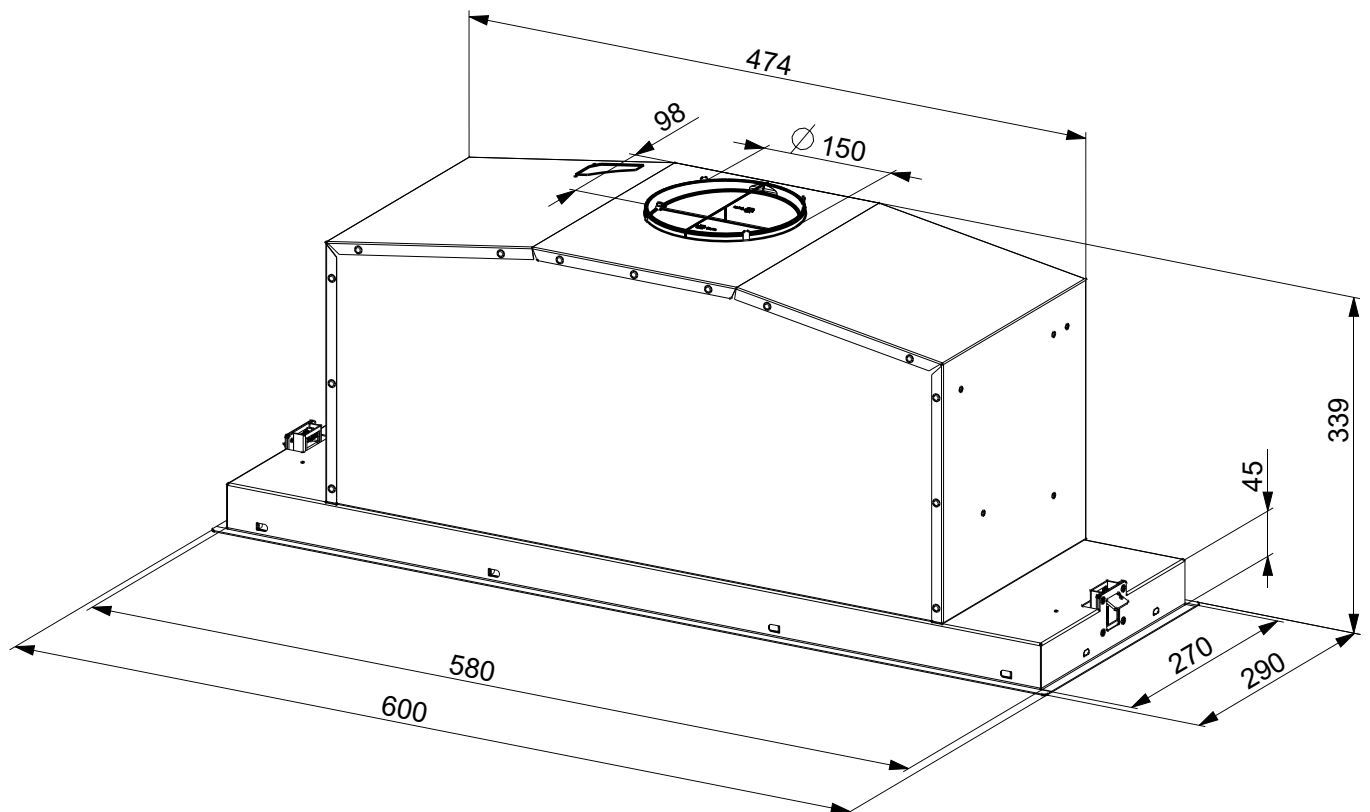
60CM UNDERMOUNT RANGEHOOD



EAN 9345025001498

Finish	Stainless steel
Dimensions	600mmW x 339mmH x 290mmD
Installation	Undermount
Motor	1 x 250W
Max Airflow	690m ³ /hr (IEC 61591)
Noise rating	50–67 dBA (IEC 60704-3)
Illumination	2 x 1W LED
Speeds	Three
Delay stop	No
Supplied Accessories	2 x stainless steel grease filters
Optional Accessories	None
Ducting Options	Duct to atmosphere / recirculate — 150mm diameter ducting required
Power	220–240V 50/60Hz 10A
Warranty	Two years parts and labour

RANGEHOODS



PLEASE NOTE: drawings are not to scale. They are to assist only.
 WARNING: technical specifications and product sizes can be varied by the manufacturer without notice.
 Cutouts for appliances should only be by physical product measurements. The above information is indicative only.

ID191202