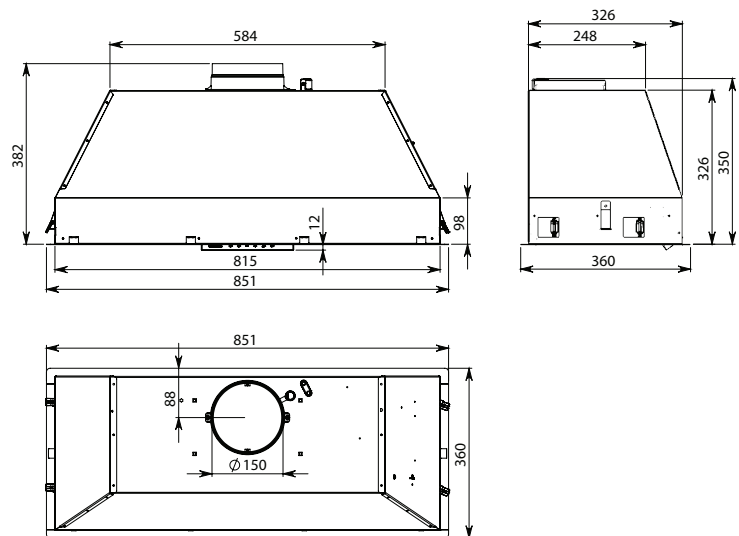




Product Features

| | |
|--------------------------------|---|
| Motor Type | On Board Motor |
| Dimensions | 851(W) x 359(H) x 382(D)mm Suits 75cm-100cm Cooking Surfaces |
| Cut-Out | 824 x 330mm |
| Filtration Type | 2 x Baffle Filters |
| Lighting Type | Dynamic LED Strip |
| Finish | 304 Stainless Steel |
| Install | Flush Frame |
| Controls | Touch Control |
| Speed Settings | 3 Speed + Boost |
| Timer Function | 15 Min Auto Shut-Off |
| Ducting | 150mm Circular Outlet |
| Installation Info | Quick Install Clips |
| Motor Type | E-Tech Brushless |
| Remote Control | Optional |
| Grease Filter Alarm | Yes |
| Dishwasher Safe Filters | Yes |

Dimensioned Drawings



* Semi-rigid or rigid ducting recommended.

| Model Code | Motor Output | Installation Option |
|------------|-----------------------|---------------------|
| FP3SND90S2 | 950m ³ /hr | Top Ducted |