

N 50, canopy cooker hood, 52 cm, Stainless steel  
D55MH56NOB



COOKING PASSION SINCE 1877



The integrated rangehood: offers a sleek and seamless design in the kitchen with fully integrated installation.

#### Features

##### Technical Data

Typology : Traditional  
Approval certificates : Australia Standards, CE, VDE  
Length electrical supply cord (cm) : 150  
Required niche size for installation (HxWxD) : 418mm x 496.0mm x 264mm  
Minimum distance above an electric hob : 500  
Minimum distance above a gas hob : 650  
Net weight (kg) : 8.964  
Type of control : Electronic  
Maximum output air extraction (m<sup>3</sup>/h) : 575  
Boost position output recirculating (m<sup>3</sup>/h) : 290.0  
Boost position air extraction (m<sup>3</sup>/h) : 650  
Number of lights : 2  
Noise level (dB) : 67  
Diameter of air outlet (mm) : 120 / 150  
Grease filter material : Washable aluminium  
EAN code : 4242004187745  
Connection Rating (W) : 277  
Current (A) : 3  
Voltage (V) : 220-240  
Frequency (Hz) : 50  
Plug type : GB plug  
Installation typology : Built-in

#### Optional accessories

Z5135X3 Standard recirculation kit



4 242004 187745

*N 50, canopy cooker hood, 52 cm, Stainless steel*  
*D55MH56NOB*

## Features

### Design & Innovation

- For installation in a kitchen cabinet
- Appliance colour: Stainless steel
- Rim ventilation
- metal grease filters with stainless steel cover

### Power and Mode of Operation

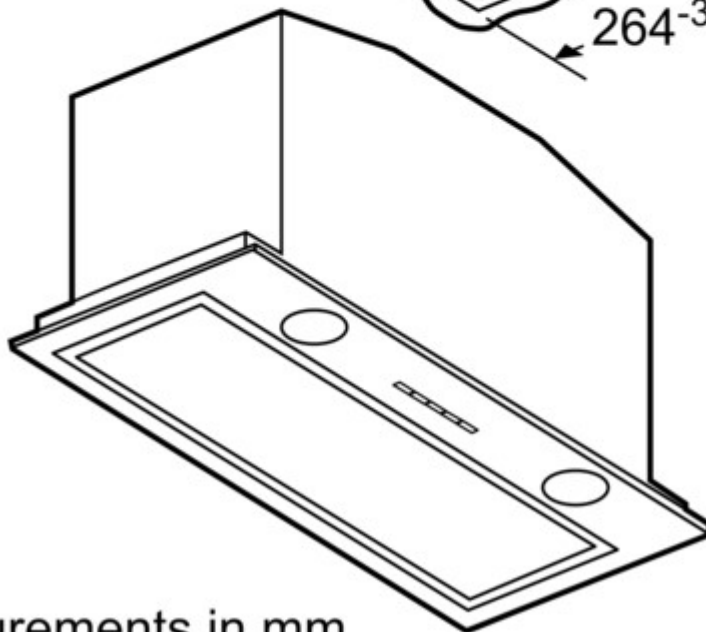
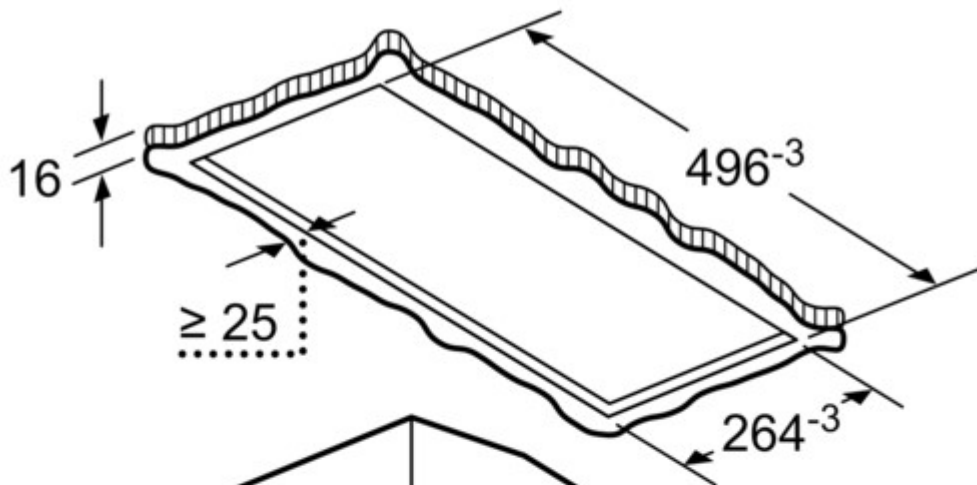
- Electronic controls
- Push button controls (3 power levels plus intensive setting) with Electronic display
- Extraction rate according to EN 61591 ø 15 cm: max. Normal use 575 m<sup>3</sup>/h Intensive 650 m<sup>3</sup>/h
- Noise min./max. Normal Level: 53/67 dB
- Suitable for ducted extraction and recirculation
- Accessories required for recirculated extraction: Recirculating kit

### Comfort & Convenience

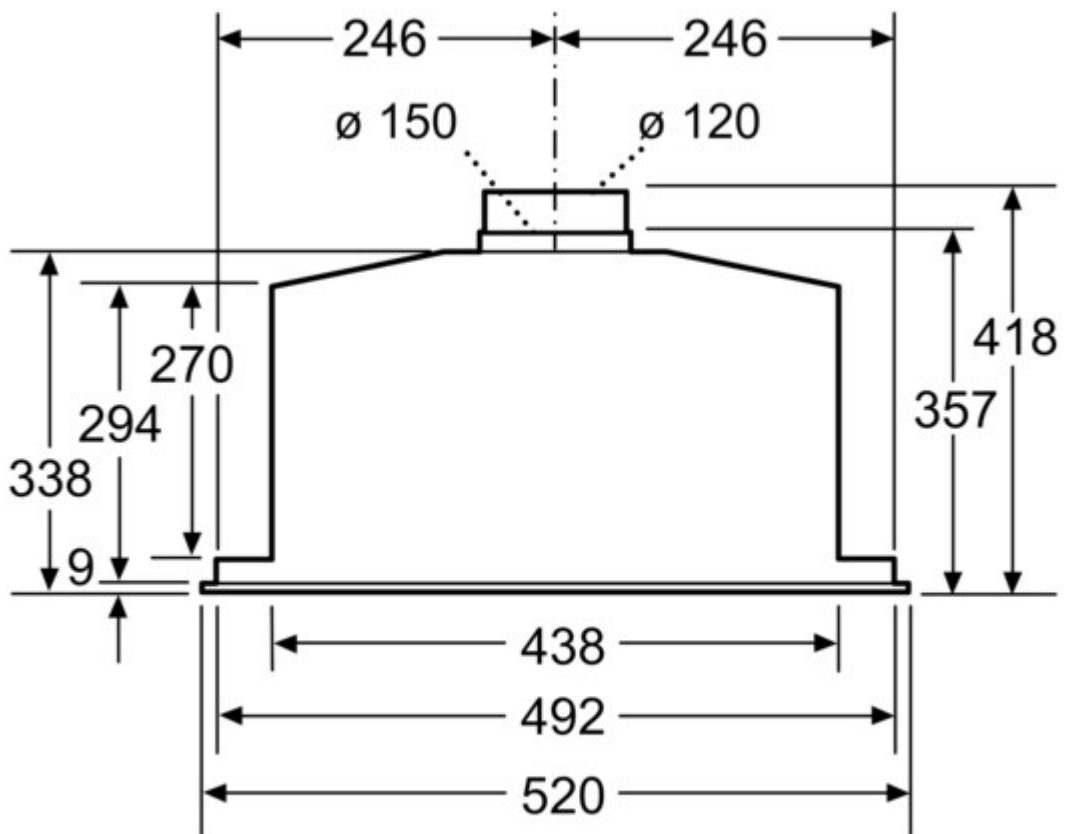
- Automatic intensive revert setting - 6 min
- Noise level according to EN 60704-3 und EN 60704-2-13 exhaust air: Max. normal use: 67 dB(A) re 1 pW (53 dB(A) re 20 µPa sound pressure) Intensive: 70 dB(A) re 1 pW (56 dB(A) re 20 µPa sound pressure)
- Twin channel high performance fan motor
- 2 x 1 Watt LED lights
- Dishwasher safe metal grease filters

### Technical Information

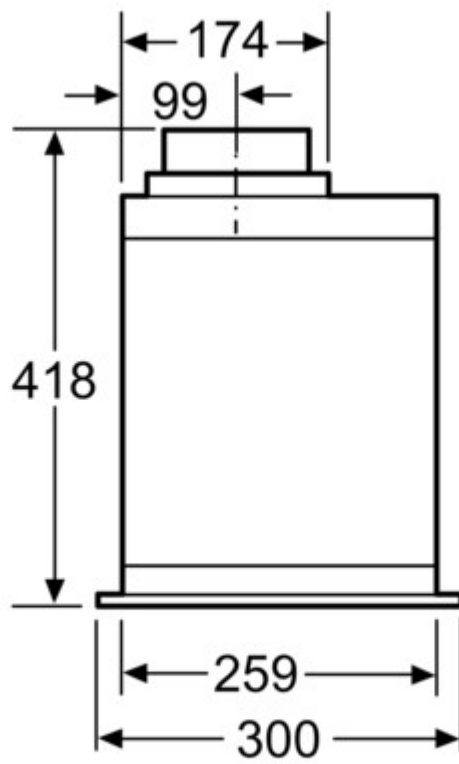
- Built-in dimensions: width: 50 cm, depth: 26 cm
- Dimensions exhaust air (HxWxD): 418-418 x 520 x 300 mm
- 120 or 150 mm tube connection diameter
- Power rating: 277 W
- Average Energy Consumption: 107.8 kWh/year
- Electrical cable length 1.5 m



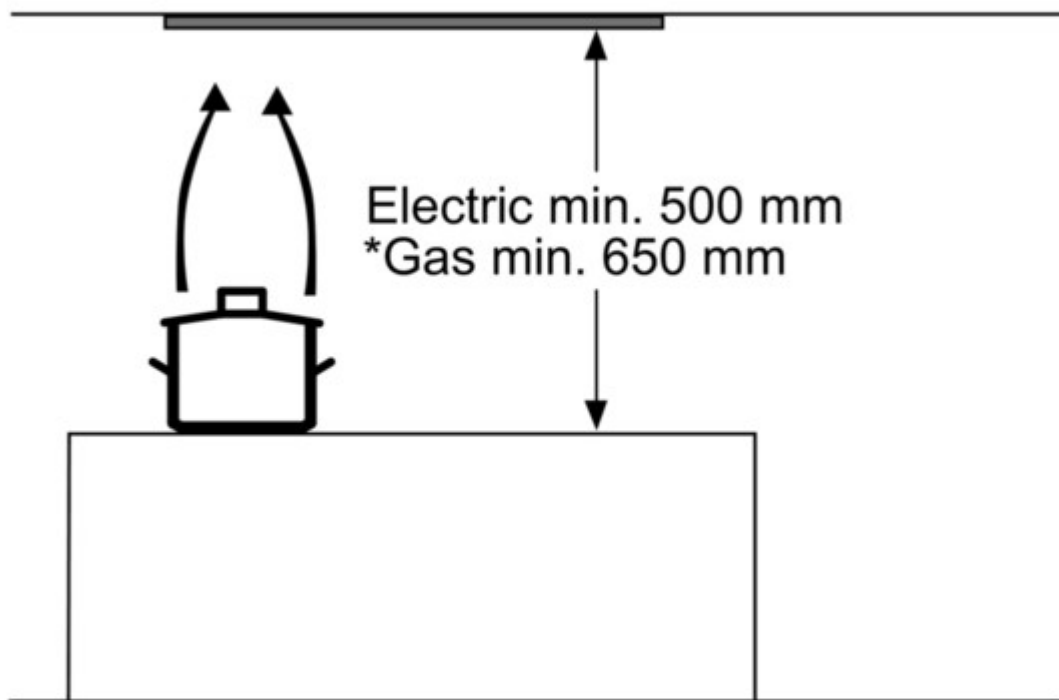
measurements in mm



measurements in mm



measurements in mm



\* from upper edge of pan support

measurements in mm